



SITKA  
LAND

A Sitka Properties Inc. Company

# BUILDING LOTS at 209 & 211 Shotgun Alley

KEY FEATURES

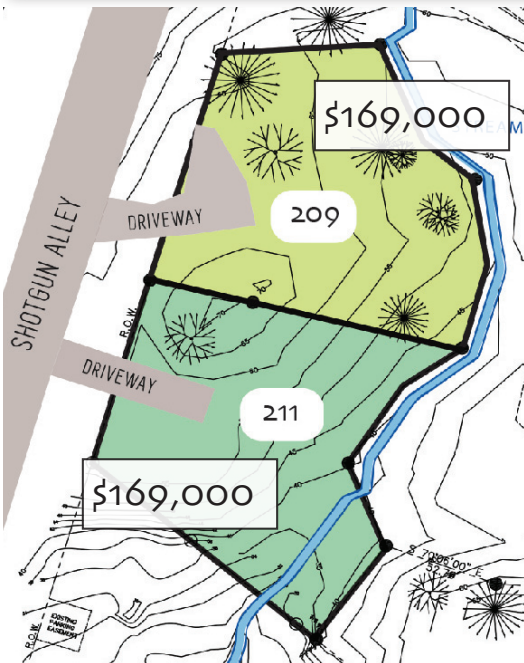
**STYLE: LAND Zoned SFLD**

<b>209 LOT SF*</b>	<b>211 LOT SF*</b>
<b>+/15,029 SF</b>	<b>+/15,109 SF</b>
<b>MLS#</b>	<b>MLS#</b>

\*The square footage and property information on this brochure was compiled from various outside sources. The above listed measurements are approximations.



SAMPLE RENDERING OF ±2,200 SF HOME



## Natural Site Design Among Old-Growth Cedars

Each of these prime forested lots were designed by the landscape architect owner. A green design concept thoughtfully integrates building sites with the old-growth cedar forest and meandering stream. The character of the lots is preserved by low density zoning and the natural topography of the land, maximizing privacy. Closeby, enjoy bike paths, whale watching and four major trails. The properties are located in a quiet, desirable Sitka neighborhood within walking distance to Thimbleberry Bay just three miles from downtown. Good building soils throughout. Utilities will be available at the property line. Visit our website at [DavisRealtySitka.com](http://DavisRealtySitka.com) or call our office for more information.

## Davis Realty

208-D Lake Street Sitka, AK 99835

Office: (907) 747-1032 | Toll Free: 1-866-747-1032 Fax: (907) 747-1035

Nancy Davis, Owner/Broker | Cell: (907) 752-1045 | Home: (907) 747-8097 | [ndavis@gci.net](mailto:ndavis@gci.net)

Kerri O'Toole, Licensed Real Estate Agent | Cell: (907) 738-1907 | [kerri@davisrealtysitka.com](mailto:kerri@davisrealtysitka.com)

[www.DavisRealtySitka.com](http://www.DavisRealtySitka.com)

USE YOUR  
SMART PHONE  
AND SCAN HERE  
FOR DETAILS,  
PHOTOS, VIRTUAL  
TOUR AND MORE

